

## HONEYMOON VALLEY LANDCARE CHARITABLE TRUST



Taonga support and restoration includes allowing kiwi to successfully nest and grow their population, increase kukupa and other bird numbers and life such as native kauri/ Powelliphanta snails, Pekapeka/ long tailed bats, and note we are nearby to rare short tailed bat colonies at Omahuta. Although Kiwi are our main focus, we have noticed a rise in other key bird life indicators such as Miro Miro/ Tomtit and Kukupa/ Kereru. Some of our contractors were involved in recent Pekapeka/ short tailed bat monitoring in nearby Omahuta Forest

We are aiming for maximum kiwi chick survival. Kiwi can live for between 25 and 50 years. Chicks hatch fully feathered. They emerge from the nest to feed at about five days old and are never fed by their parents. Juveniles grow slowly, taking three to five years to reach adult size.



Living amongst the hills in this special area with a high rainfall has its challenges, our community and our tāonga bind us together. Here's what we have been doing over the past year and what's planned in the next few months. We look forward to evolving and learning more, while receiving sustenance from our beautiful surroundings.

Progress report from Maungataniwha Ngāhere Ora/ Forest Biodiversity and Kiwi Corridor Project of 7000 hectares guided by its own Governance Group and supported by our Trust.

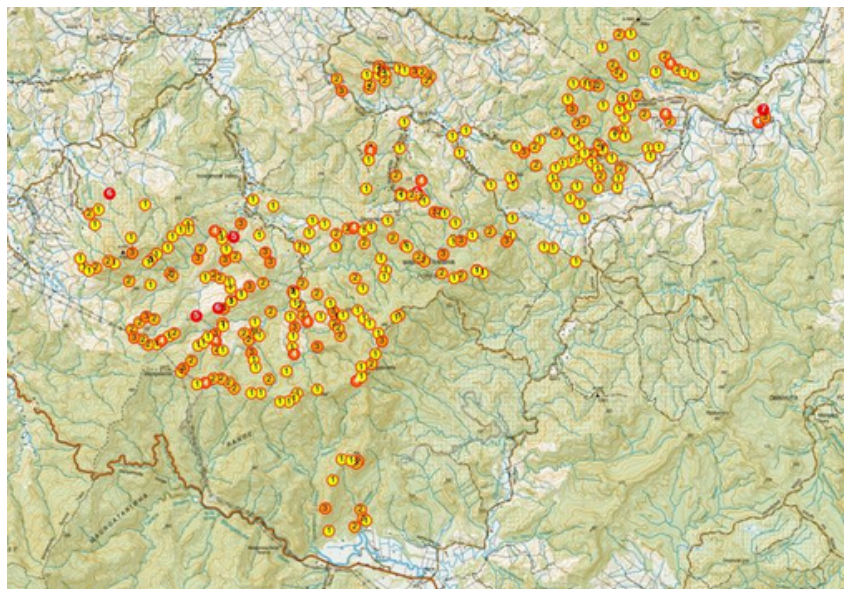
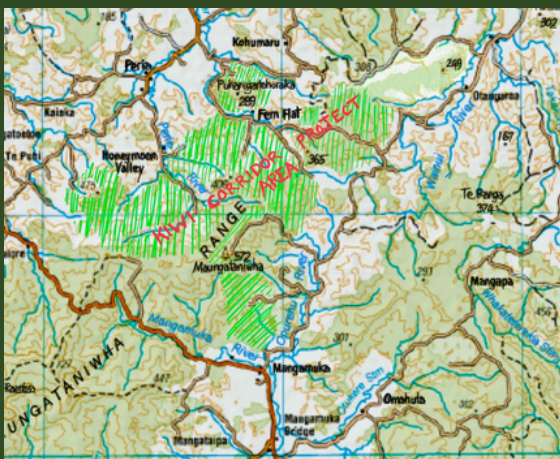
We are a team of over 25 actively working on public conservation land together with more than 25 private participating land owners and Native Forest Restoration Trust who support this project. We thank all our participating land owners for being part of this whole landscape approach.

Funding from Jobs for Nature/ Save the Kiwi is strictly allocated and ends in mid 2025. We have had positive feedback that our Jobs for Nature project is on track and has gone well. We were thoroughly audited last year by the chartered accountancy firm PKFFA and got a sound endorsement from them that all our financial processes are robust and transparent.

We employ an experienced and capable team of eight local Contractors/ Kaimahi who service over 1300 traps out on 153 km of tracks. Set up is largely done now, some were old tracks upgraded and many new ones scoped and cut. This year involved additional wind throw storm damage hand work on tracks.

Our trap network is focused on mustelids, feral cats and possums based on best practice, supervised by our Operations Manager Bernard Coogan. We are on high alert for any ferret presence which apparently we have not had as yet. Trapline protocols include specified trapline spacing within the forest, recommended trap spacing along tracks, best seasonal baiting practices and the loop tracks average 10 km in distance.

Awesome work, they have killed 4383 predators over the past year





We now have 20 Trail cameras out giving us some good "intell" on what life is out there in the forest eg here is a cat, kiwi and pigs in the same area.



### Possum Update

While our forest project is not funded for comprehensive possum control, we feel possum browse is a key forest stress and are advocating for significant resources for this now. We have been able to allocate some of our current funding in to this and have the following plans being implemented over the next six months.

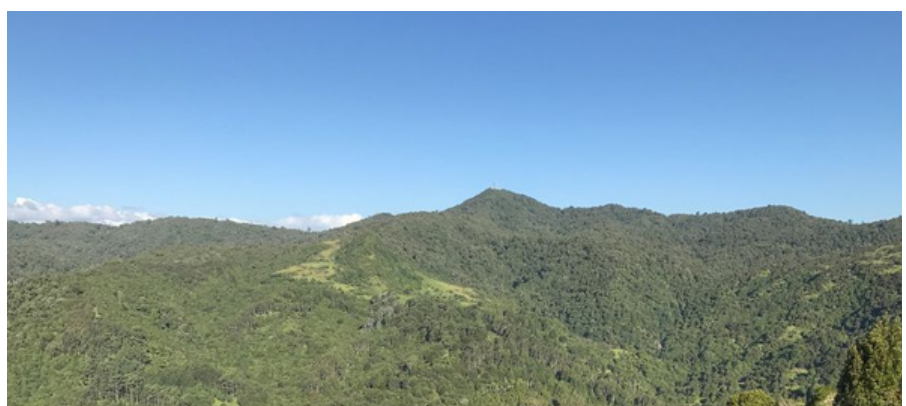
We are in the process of establishing regular possum control on private land in the north-eastern parts of Honeymoon Valley. This will be around 150 SA kill traps baited for possums serviced by one of our professional contractors 18 times per year.

We have identified a 450 hectare block of high value public conservation land to the North and West of Maungataniwha which we will be intensively trapped, followed by a post operation possum monitor to measure our performance. We have tracks down the major spurs with the aim of trapping within 100m of any given point across the landscape. This should hopefully result in all the residential possums within this area having the opportunity to interact with one of our traps. Our aim is to achieve a post operation monitor of less than 15% on our wax tag index (standard possum monitoring protocols).

The major challenge of this operation will be the re-invasion following the completion of our trapping. With this operation we aim to demonstrate our ability to effectively and efficiently knockdown possum numbers to attract additional funding to expand our possum control efforts.

We very much appreciate all our volunteer effort on possums, with over 1240 possums trapped by Wayne + others in Honeymoon Valley, and 1770 from other parts of our Kiwi Corridor project killed in the past year. Possum fur has provided nearly \$5K income to some of the volunteer possum hunters over the past year.

If you want to learn more about how to do local possum hunting on your place, give Wayne a call 021 034 2118.



Out at 8am ready to go uphill on a frosty morning.

We value our Kaitiaki Kaimahi / contractors, this job is not for the faint hearted, demanding stamina and commitment to killing these kiwi and bird predators in some steep forest country, with wet season challenges and road closures.

Some of our contractors have also been called into other nearby projects for occasional work as they are reliable and experienced in these northern rainforests. Thanks to Bernard, Mandy, Kelly, Tor, Miro, Charley, Zara and Chris. Note: photos of our kaimahi out on the job are hard to get cos they don't do selfies on the tools, no matter how many times I ask! (Editor). Also often working alone.

Baiting and seasonal changes to achieve the best predator catches is always a high interest topic with our contractors who are out to kill as many of these highly instinctual natural born killer predators as possible in our forest. Using the term predator rather than pest recognises that we are hunting highly intelligent and skilled killers.

Our contractors are an increasingly experienced active kaitiaki "eyes and ears on the ground" noticing animal tracks, birds, flowering, different species such as fungi, forest changes and offering suggestions.

Looking ahead we would like more funding so that our multi-tasking/ forest aware contractors could be paid to do other things while up in the forest; such as more species monitoring, possum work and live trapping of roaming dogs.

Project Manager - Bernard Coogan 021 206 6719







## Looking ahead for our northern forests 2023 – 2030

- What was the forest like?
- What is on top for this forest?
- Mapping the past, mapping the future
- Local voices campaign
- What do our communities and forest want long term?

Maungataniwha Forest Conservation Park is a very important northern ngāhere/ forest connected to some of the highest peaks in the Far North; Maungataniwha 572m, Raetea 744m and SH1 gorge road summit 383m. It has huge ecological and cultural significance to many surrounding hapu and communities, and we aim to help strengthen the common voice for these forests. We are also nearby to Omahuta Forest and Puketū Forests which offers opportunity for even more ecological landscape connectivity.

Care of these high biodiversity forests has been neglected in past decades.

Connecting up projects - Landscape connectivity with wildlife friendly corridors is essential allowing taonga to thrive and safely disperse and roam on conservation and private land eg Maungataniwha, Mangamuka Gorge Reserve, Otangaroa Forest, Omahuta, Puketū, Kiwi Coast. Wholistic management of natural and physical resources recognises interconnectedness which is all part of sustainable land management and leaving things better for the next 7 generations.

We aim to support and help grow the Kaitiaki team, and build more community capability and support. With this in mind we look forward to more collective input into our Maungataniwha Ngāhere Kiwi Corridor Project - Looking ahead 2025 - 2030 at our wānanga at Kauhanga Marae, Peria in late September.

Working together to enhance the Maungataniwha Forest Kiwi Corridor and Biodiversity Project with local communities from Otangaroa, Fern Flat, Honeymoon Valley towards Mangamuka for present and future generations



## Roaming dogs in Maungataniwha forest remain a challenge

Recent publicity that Bay Bush Action in Waitangi have suffered quite a few kiwi deaths by roaming dogs has highlighted this key issue for kiwi survival in Te Tai Tokerau again. We are on high alert for our project. We can do so much better than this for our tāonga species.

Over the past year we have noted several roaming dogs without collars, high up in the forest on our trail cameras and we are concerned about our kiwi call counts. Work has gone on behind the scenes to identify these dogs in our project area and encourage the owners to keep them at home at all times. FNDC Animal Management continue to help, so please photograph and report roaming dogs to FNDC if you see them in isolated areas so they can be impounded.

### WE ADVOCATE:

#### KIWI CARE FOR DOG OWNERS

- Dogs not roaming
- Dogs indoors at night or tied up when kiwi are out and about: from early evening to early morning
- Don't walk your dog in the bush unless on a leash.
- Be responsible with your visitors dogs
- If you live near kiwi habitat then have your dog Kiwi aversion trained, which is 65% - 95% effective

We host kiwi dog aversion training once per year for our local valley pig hunters who use dogs in our forest.



Free "Know your dog workshop" (without your dog) for dog owners living around high biodiversity areas wanting to understand and enjoy your dog relationship and communication more.

Contact us if you are interested: Sandra 021 116 4207

Free Kiwi care signs available in 3 versions: Dogs on a lead, No dogs and Dogs by permission only (as in photo here)

## Congratulations to all of our Corridor Project Team



We were Highly commended in 2 out of the 9 categories in the Northland Regional Council - Whakamanāwa ā Taiao Environmental Awards 2023 :

'Environmental action in the community'

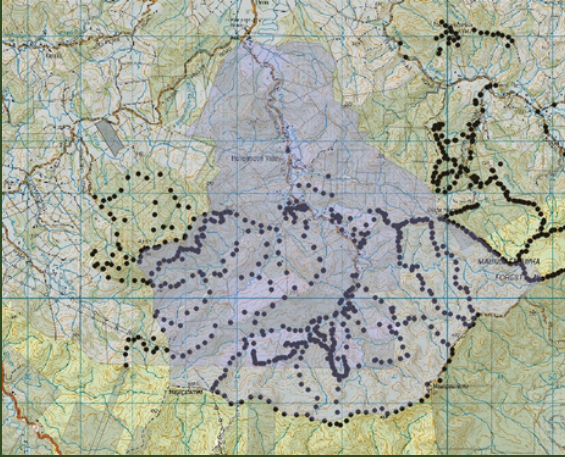
'Environmental action to protect native life'

This award goes to all 25 of the Corridor team - you know who you are!



## Honeymoon Valley Catchment

Honeymoon Valley Catchment shown in purple colour (predator traps out as at Jan 2023 are the black dots)



The local Honeymoon Valley Landcare Charitable Trust focus area is the 3100 hectares of stream catchment area in our valley.

Five Trustees with about another 15 valley landowners work in the valley together. Our catchment starts from the hill top ridges where the rain flows into the smaller streams that feed into Honeymoon Valley streams onto Peria Stream, then out past Kauhanga Marae joining to Oruru River and then out to Taipa.

The predator control project area presently covers about 2000 ha of this upper Honeymoon Valley catchment, we could expand in future to cover the whole catchment if we get more funding.

We applied to the Department of Conservation Community Fund earlier in 2023 but were not successful. However this made us draft plans and budgets for:

- Fresh water ecosystem protection and weed action work on all 3100ha to link down to Kauhanga Marae, with weed survey hot spots to support community action.
- Predator control project expansion of 1000ha on mid and lower Honeymoon Valley catchment.

We are keeping an eye out for support to make it happen.

\*\*\* Volunteer hours on Honeymoon Valley Landcare kaitiaki mahi total over 2500 hours over the past year with weed and predator control on private and native reserve land over the past year. Thank you! \*\*\*



Honeymoon Valley Landcare



honeymoonvalleylandcare@gmail.com



www.honeymoonvalleylandcare.org.nz

Ngā Āwa River Restoration helps convene the Doubtless Bay Community Catchment Roopu. There are 3 sub catchments of Awapoko, Oruru, and Oruciti, and we are part of Oruru. Recent developments within our catchment:

- An extensive review of all the local information available for this catchment will be presented at Taipa Resort by Environmental Planners Boffa Miskell on 5 September. If you are interested in this then please email us or phone Yvonne 09 4085588.
- Te Paatu ki Kauhanga Trust are finalising their river monitoring plan and will commence fencing in September 2023.
- Stream health surveys will take place with hapū in some locations in the river sub catchment
  - Fish Surveys (Inanga, Kewai, Eels, Freshwater Mussels, Lamprey) will be undertaken using Electrofishing, nets, EDNA, and other methodologies together with the Nga Awa team that Te Papa Atawhai/ Dept of Conservation support.
- Whitebait Connection programme - experiential education continues in local streams with Peria and Taipa Area Schools.
  - Living with Living Rivers - Research Proposal by University of Auckland to support our catchment - Co design with Hapu and Community in October.
- Mapping training support going forward so we can use a integrated system of map layers for all our stream catchments, streams, flooding risk areas, GPS weed hot spots, predator traplines, catches etc
- Honeymoon Valley stream is used by NRC for the base line monitoring water quality standard of Doubtless Bay. Our upper streams are mostly natural, with high water quality but it degrades going down the catchment. We welcome the connection Ki uta, ki tai, from the mountains to the sea.

### OTHER EVENTS WE HAVE BEEN PART OF:

- Hosted Save the Kiwi, Dept Conservation project visit in March
- Mangonui Waterfront Festival Kaitiaki tent in March
- Fern Flat Landcare pop up day in May
- Kiwi Coast hui in Waipu in June
- Annual National Kiwi Hui in Taranaki
- Linking conservation projects" meeting in Mangamuka in July



We try to support landcare and stream care with our neighbouring inland valleys of Peria, Fern Flat and Fairburn, especially based on their awa/stream catchments. Great to hear that Toro Stream/ Shepherds Road predator trappers in Fern Flat are up and running and supported by NRC. Other Fern Flat folks are doing some focused mahi on their own properties with trapping and ginger and stream weed focus.



We are supported by and working with: Jobs for Nature, Save the Kiwi, Department of Conservation/ Te Papa Atawhai, Northland Regional Council, Reconnecting Northland, Predator Free 2050, Native Forest Restoration Trust, QEII Trust /Forever Protected / Ngā Kairauhi Papa, Summit Forests NZ, Honeymoon Valley Landcare Charitable Trust, Te Paatu ki Kauhanga Trust, and Otangaroa Marae, Whangaroa Papa Hapu.

## PERIA WEED ACTION UPDATE

Did you know that most fleshy-fruited environmental weed seeds (such as privet and ginger) are generally likely to be dispersed less than 100 metres by birds ?

So that's a good incentive to do your place and nearby! Some seeds can be dispersed hundreds of metres or even several kilometres (by birds and mammals) but a local focus is top priority and achievable.

### AVAILABLE FREE

- Free info on ginger, privet and jasmine
- Weed control options - organic and non-organic
- Weed Gel and Tools for loan for Honeymoon Valley residents
- Drill and fill demo to kill wilding pines and acacias in future
- 

Alert!! We note that bat wing passionflower vine is in Kohumaru (photo below) - spread by birds, keep an eye out, advise NRC, remove immediately and burn.



### UPCOMING WEED DATES:

Next Honeymoon Valley Weed Working Bee is Sunday 10 September 10am - 12 noon, weather permitting.

Privet work along the roadside - starting 490 Honeymoon Valley Road parking area Privet and Tobacco weed around 580 Honeymoon Valley Road

Text Yvonne 027 6999 063 if you want to be notified a few days before valley working bees

### WISE UP TO WEEDS FREE Workshop in Kaitiaia

Date: Tuesday 19 September 9:00am - 12:00pm  
Venue: Toka Tumoana, 26 Matthews Avenue

Kaitiaia NRC pest plant experts will tell you how to tackle Northland's worst weeds so you can stop them in their tracks and protect our forests:

- Learn how to identify weeds
- Learn about garden escapes
- Understand how weeds spread and why they're a problem
- Learn how to get rid of weeds/stop weeds in their tracks
- Free hands-on, interactive, and fun workshop.

Register online with NRC as soon as possible or email: sarab@nrc.govt.nz

### KAITIAKI VOLUNTEERS WANTED "Tramping with a purpose!"

Are you or someone you know interested in a day out in the wilderness each month making a difference to our native areas? Would suit responsible fit tramping types, 4WD vehicle may be handy. Enjoy some rewarding weed busting - organic and Cutnpaste options, tools and materials provided. Just bring your lunch and a drink. Orientation day working together to get started. Predator trapping options also available if you can come out regularly.

Email us or phone Yvonne if you are interested: 09 4085588. 027 6999 063

Private donations also help our valley weed work that is not funded by anyone else, and we are grateful for over \$1000 received for this in the past year that helps towards our ginger weed action.

Remember donations to our Charitable Trust are 33% tax deductible:  
Honeymoon Valley Landcare 38 9016 0688584 00

Thanks to our Trustees: Shayne Waldron, Sandra Carey, Loie Webb, Julien Atkinson and Gerlinde Andrashcko. Phone Shayne 027 337 7925

Thanks to our Corridor Project Governance Group: Dean Baigent-Mercer, Ngawai Tuson, Lesley Baigent, Robyn Tauroa, Steve Allan, Shayne Waldron, Ngaire Tauhara-White, Jamie Werner.

### Upcoming pine forest harvesting in Honeymoon Valley

We have a good relationship with Summit Forests NZ and they support predator control in their Duttons Road forest. They have advised forest roading and harvesting is planned to start soon and run for 2.5 years. There are obvious safety and road condition issues with logging trucks sharing our road, especially in winter. However the key issues for our group with the forestry management are;

1. Environmental impact on our streams and river Clear-felling on a large scale and in winter presents a lot of issues in our high rainfall area and we hope best practice happens and the soil remains in place. There are very specific rules for logging close to streams and water and also planting must be 10 metres away - we feel it should be a much further distance to have stream wildlife corridors and stream side buffer zones to hold back stream sedimentation. In talking with them apparently, the slash issue is completely different from the scenario on the East Coast, because of the processing in Kaitiaia means that far more "slash" is taken out, and we are close to the top of the catchment.
2. Are kiwi present and what is planned for their protection?
3. Protecting and enhancing native vegetation pockets, wetlands and native stands long term within this landscape.
4. Good pest and predator hunting procedures before, during and after logging so there is not an influx of pests into neighbouring forest and landowners properties.
5. Weed management and eradication going forward. We are trying to limit privet and ginger spread in our valley and both these weeds are present nearby. We understand they take weed control seriously in their forestry blocks, so we hope there is not a proliferation of problem weeds after harvest.

### HONEYMOON VALLEY LANDCARE KAUPAPA

- Looking after the valley for our enjoyment and for future generations
- Working together whilst respecting everyone's privacy on their land
- Increasing native birdlife and the health of our surrounding forests
- Reducing problem weeds in our valley
- Maintain our high water quality and natural native stream side vegetation

On-site Weed meetings in Peria with Ceres Sharp - NRC Biosecurity Pest Plant Officer  
Thursday 28 September.

Look at weeds present and discuss strategy and support options.

- 9 am upper Fern Flat ginger - 97 Te Karoa Road-Email: Meg baddiegoat@gmail.com
- 12 noon Honeymoon Valley Road and Peria Valley Road corner-Ph: Yvonne 094085588
- 3 pm Kohumaru Road/ Kohumaru Landcare - Ph: Marianna 022 6994 672